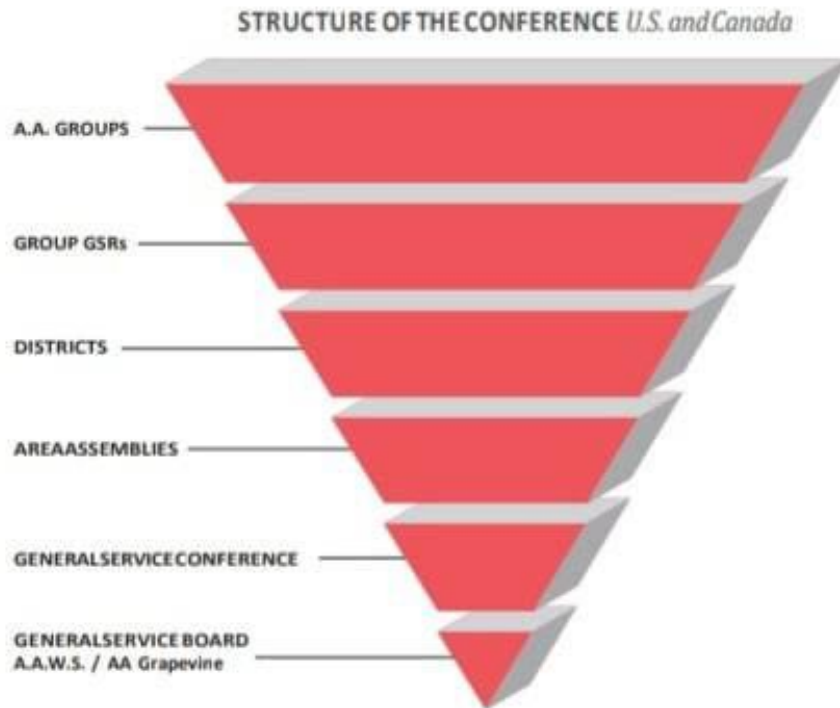


# STRUCTURE OF U.S./CANADA GENERAL SERVICE CONFERENCE

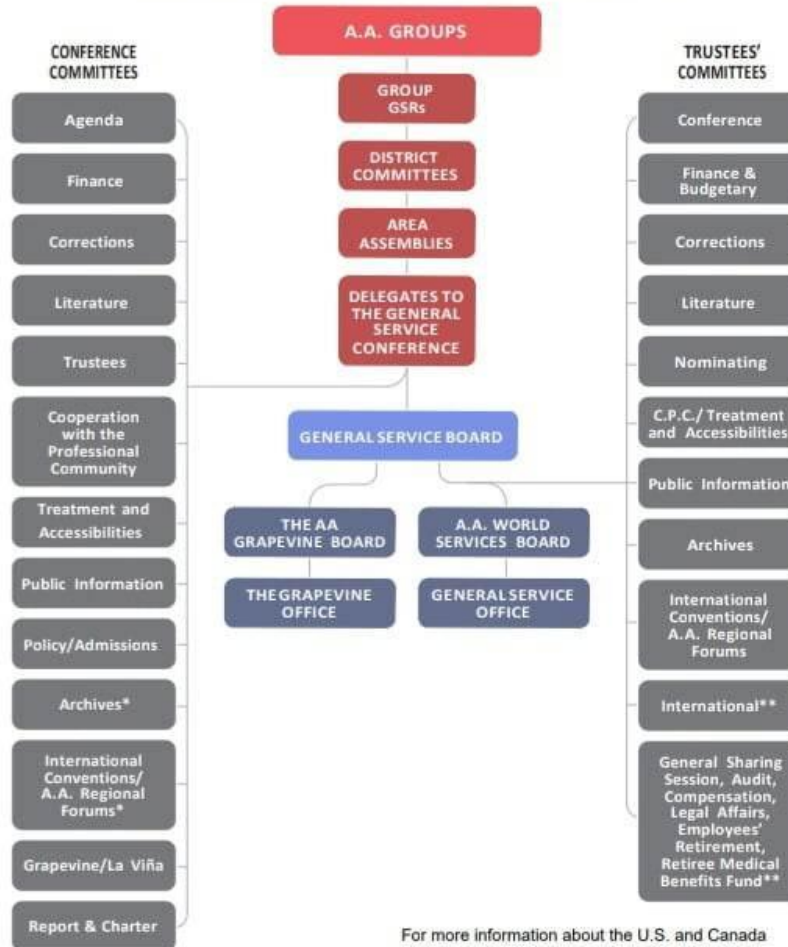
THE "UPSIDE-DOWN TRIANGLE"

Page 103  
BM-31



THE GENERAL SERVICE CONFERENCE STRUCTURE U.S. and Canada

P104  
BM-31



For more information about the U.S. and Canada General Service Conference Structure please see [The A.A. Service Manual/Twelve Concepts for World Service \(BM-31\)](#).

\* Secondary committee